

**Criteria for Cooperative Implementation Agreement:**

**1) Reach Priority list;**

The Reach Prioritization list will be posted on the State Board website. Caltrans should also have it posted on the Caltrans website in November 2015.

What reach is the project located in and where on the priority list does it land?

**2) Number of pollutant categories treated (list TMDLs)**

- 1) Sediment/Nutrients/Mercury/Siltation/Turbidity
- 2) Metals/Toxics/Pesticides
- 3) Trash
- 4) Bacteria
- 5) Diazinon
- 6) Selenium
- 7) Temperature
- 8) Chloride

**3) a) What stage is the project in (Conceptual, Environmental Documents and Permits, Design?)**

Is the project conceptual? What environmental documents and permits been obtained? Is the project in design?

**b) Project Schedule and funding requested by local MS4.**

Include project schedule and total funding (show funds broken down by fiscal year).

**4) Maintenance and Operation costs.**

Will the maintenance and operation costs be solely borne by the MS4?

**5) Number of Stakeholders benefitted from the project**

How many local MS4s will benefit from the project? Please list MS4s.

**6) Amount of runoff from Caltrans Right of Way (if any)**

How many acres of Caltrans right of way is being treated?

**7) Lead agency; individual MS4(s), JPA, stakeholder group?**

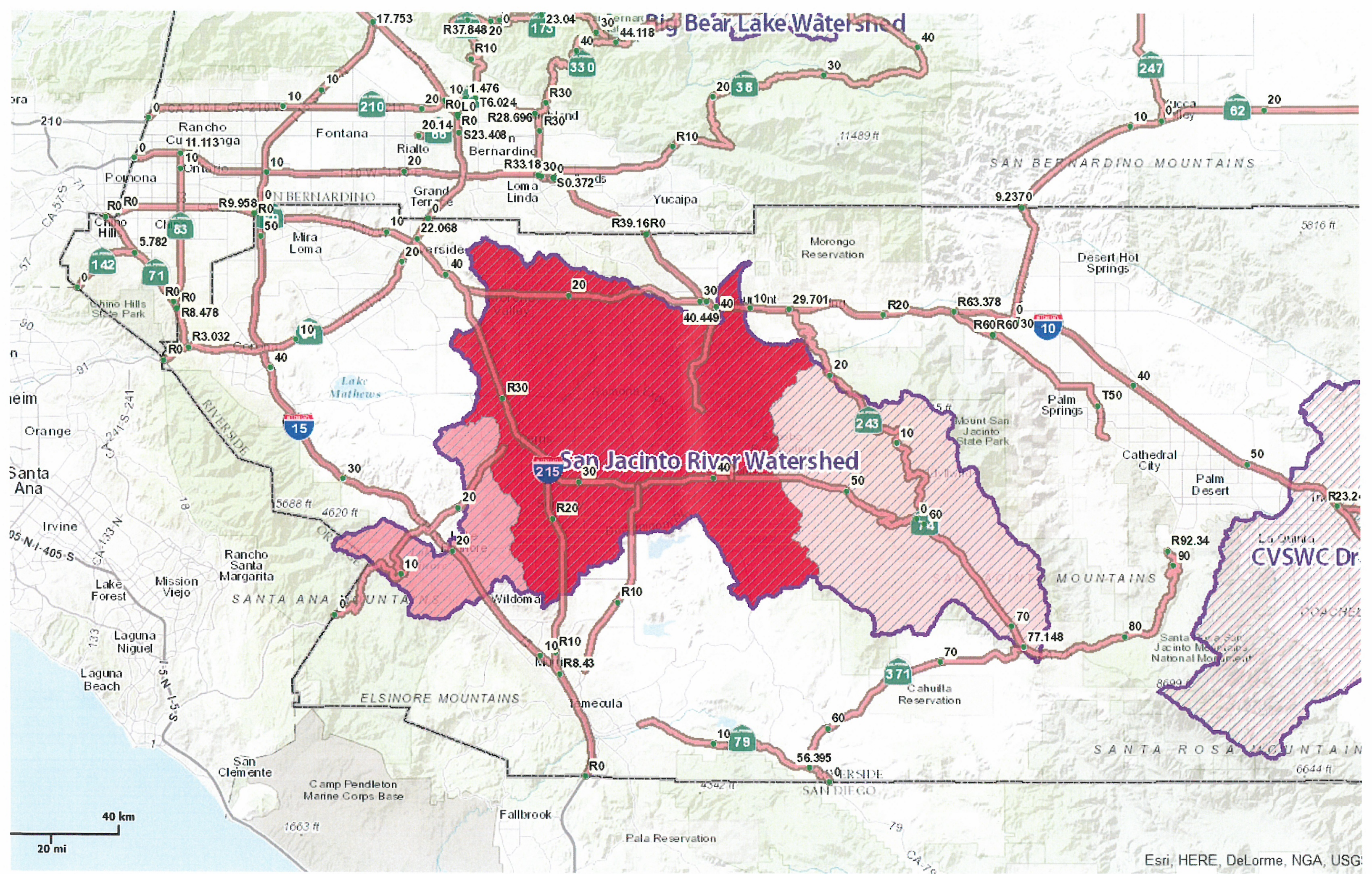
Will CT be dealing with an individual MS4, JPA, or stakeholder group?

**8) Type of BMP to be built. (Full capture, reuse, etc.)?**

**9) Number of acres treated**

How many acres will be treated (BMP type, dry and wet weather flows)?





Big Bear Lake Watershed

San Jacinto River Watershed

CVSWC Dr.



