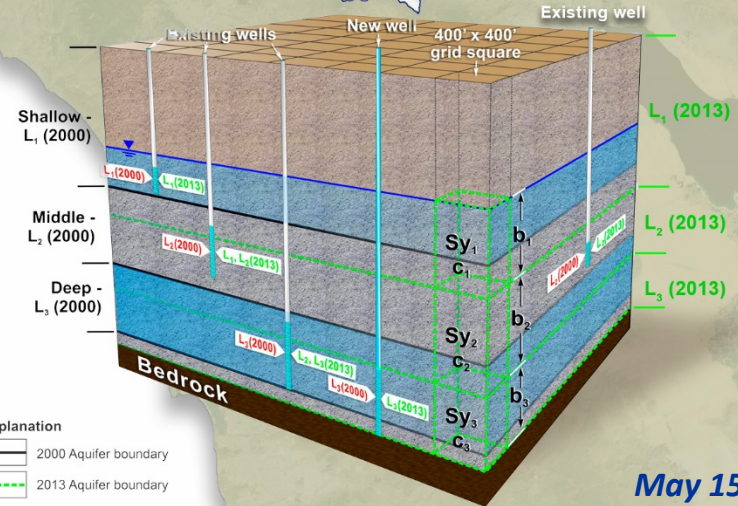


TDS/Nitrogen Management Plan for the Santa Ana River Basin *Groundwater Monitoring Requirements*

Ambient Water Quality: Update



May 15, 2017

Status

- April 21, 2017 Received Private Well Database from Chino Basin Watermaster
- Initial QA/QC, Data Upload, Four quality tests
- Shapiro Wilk Normality Test and Development of Point Statistics
- Plot point statistics and averages for the Chino Management Zones

PRELIMINARY SUBJECT TO REVISION

Explanation

- Statistic 8.5 Well With Ambient TDS Statistic
- Average 8.5 Well Without Ambient TDS Statistic (Average Only)
- Contour of Equal TDS Concentration
- Management Zone Boundary
- Recharge Basin
- Rivers and Streams
- Geology
 - Quaternary Alluvium
 - Consolidated Bedrock
 - Semi-Consolidated Sediments
- Faults
 - Location Certain
 - Location Approximate
 - Location Concealed
 - Location Uncertain
 - Approximate Location of Groundwater Barrier

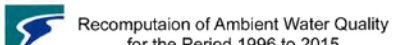


0 1 2 Miles

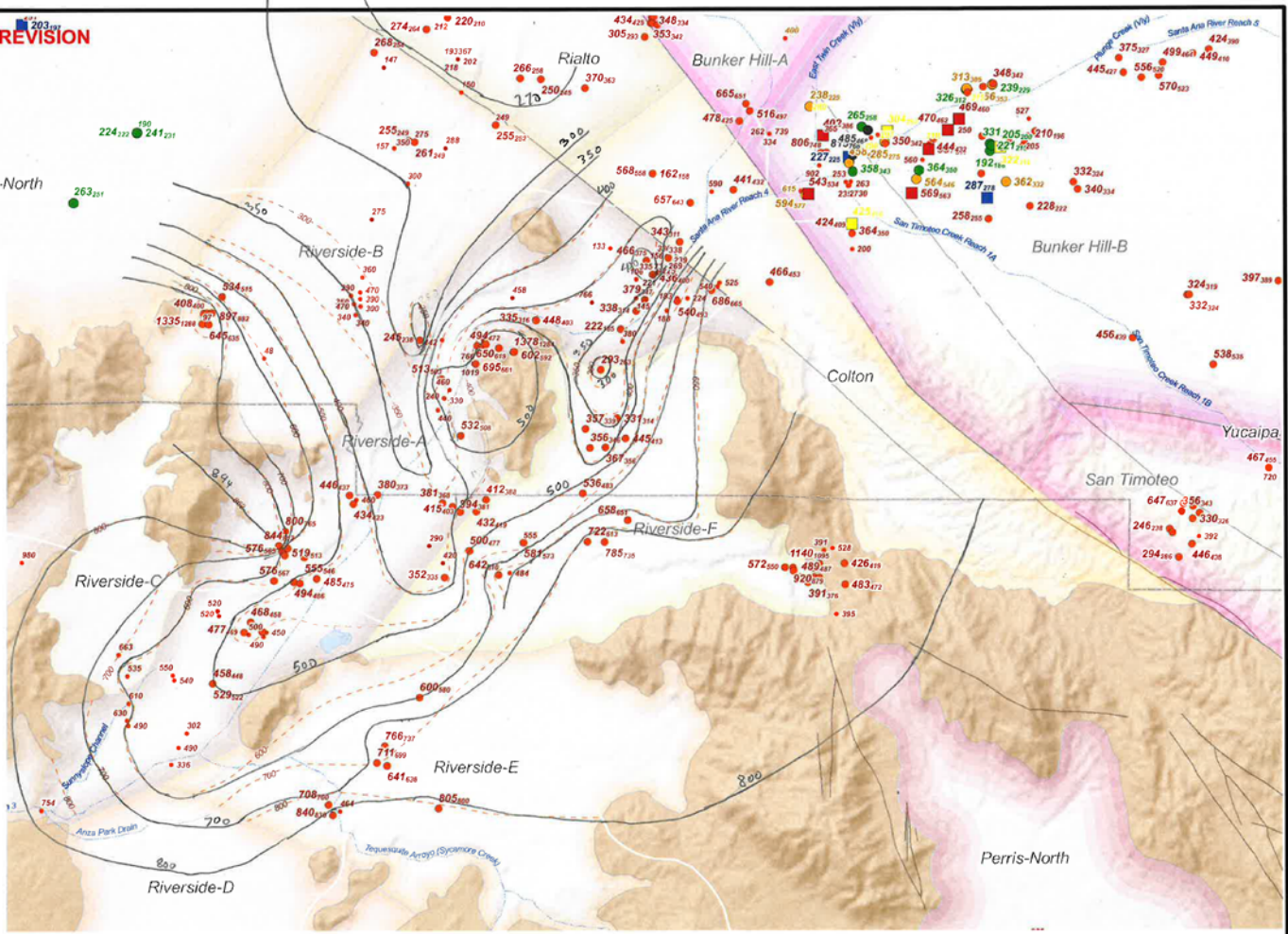
Source: SAWPA.net, January, 2016



SAWPA Basin Monitoring Program Task Force



Recomputation of Ambient Water Quality for the Period 1996 to 2015



AMBIENT WATER QUALITY (1996 TO 2015)
Total Dissolved Solids
Riverside A,B,C,E and F GMZ's

Figure 2

Status

- Hand drawn contours and QA/QC
- Review Water Quality and Water Level Maps

Questions?