

Who is SAWPA?

SAWPA is a Watershed Agency Focused on Regional Water Issues

Formed originally in 1968 as a planning agency, the Santa Ana Watershed Project Authority (SAWPA) was created to help resolve interagency conflicts and address regional water issues in the Santa Ana River watershed. SAWPA tackles issues related to water supply reliability, water quality improvement, recycled water, wastewater treatment, groundwater management, and brine disposal.

SAWPA's Role

SAWPA Administers Multi-Agency Task Forces

SAWPA serves as an administrator for several Task Forces within the watershed through meeting facilitation, contract service administration, and Task Force Agreement coordination. Through collaborative processes, SAWPA creates value by building relationships among regulators, SAWPA members, and regulated parties that allow for economies of scale, reduced costs, or increased benefits in addressing water related issues; provides regional capacity and neutral venue for supporting multi-agency forum(s) to address the water resources challenges in the Santa Ana River Watershed; and assists in the establishment and on-going facilitation of stakeholder processes to address watershed-specific issues.

SAWPA Supports its Member Agencies and Other Organizations with Water Planning

SAWPA is a Joint Powers Authority of five member agencies that supports water resources planning: Eastern Municipal Water District, Inland Empire Utilities Agency, Orange County Water District, San Bernardino Valley Municipal Water District, and Western Municipal Water District. SAWPA seeks to create and facilitate partnerships with and between organizations pursuing shared interests and overall watershed sustainability. Our regional leadership provides a model of collaboration and cooperation utilizing integrated solutions. SAWPA's Mission is to:

- Facilitate communication
- Identify emerging opportunities
- Develop regional plans
- Secure funding
- Implement programs
- Build projects
- Operate and maintain facilities

The **Regional Water Quality Monitoring Task Force** is one of our success stories – additional information about SAWPA programs can be found at www.sawpa.gov.

SAWPA Regional Planning Efforts

Middle Santa Ana River TMDL Task Force
Emerging Constituents Program Task Force
Basin Monitoring Program Task Force
Imported Water Recharge Workgroup
One Water One Watershed Program
Santa Ana Sucker Conservation Team
Lake Elsinore and Canyon Lake TMDL Task Force
Forest First
WECAN
Arundo Habitat Management
Lake Elsinore & San Jacinto Watersheds Authority



REGIONAL WATER QUALITY MONITORING TASK FORCE

The Regional Water Quality Monitoring Task Force implements a regional surface water quality monitoring program focused on bacteria.

SAWPA Member Agencies



What is the Task Force?

Regional Water Quality Monitoring Task Force

The Task Force was formed in 2016 to implement a coordinated regional water quality monitoring program in the Santa Ana River watershed. This monitoring program combines the separate bacteria monitoring programs of Riverside, San Bernardino, and Orange Counties with the existing bacteria monitoring program under the Middle Santa Ana River TMDL Task Force administered by SAWPA. The purpose is to streamline regional monitoring efforts.

What are the goals of the Task Force?

Monitor Bacteria

- Implement Santa Ana River Regional Bacteria Monitoring Program
- Fulfill the monitoring and surveillance requirements of the 2012 Santa Ana Basin Plan Amendment
- Conduct sampling to support implementation of the Middle Santa Ana River Bacterial Indicator TMDL
- Support any additional bacterial indicator monitoring that may be conducted in the watershed to support regional regulatory activities
- Assist Regional Board with future triennial reviews and future amendments of the Basin Plan
 - » 303(d) listings for Bacteria Indicators
 - » Statewide bacteria Standards

Learn More and Contact Information

For the latest information on the Regional Water Quality Monitoring Task Force, please visit:



www.sawpa.gov/task-forces/regional-water-quality-monitoring-task-force/

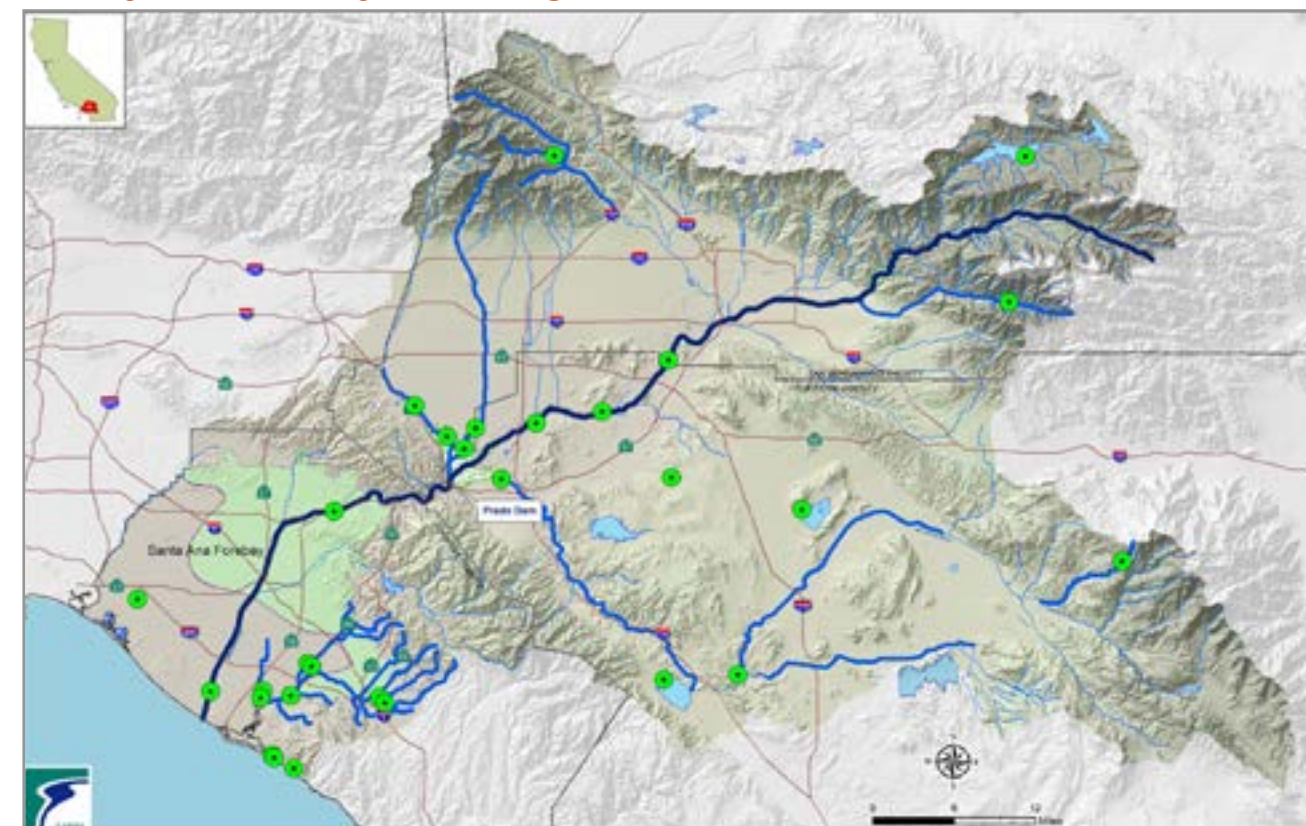


www.CAWaterLibrary.net



Contact Rick Whetsel at rwhetsel@sawpa.gov

Priority Water Quality Monitoring Locations in the Santa Ana River Watershed



These sites are considered to be the top priority to establish a monitoring program that can determine whether bacteria levels are "safe" at these locations where people are most likely to engage in water contact recreation.

5
QUARTERLY
WATER
QUALITY
MONITORING
REPORTS

2
ANNUAL
MONITORING
REPORTS

31
SITES
MONITORED
ANNUALLY

344
SAMPLES
COLLECTED
ANNUALLY

1932
WATER
QUALITY
DATA POINTS
REPORTED
ANNUALLY

Who is the Task Force?

Collaboration in Place of New Regulation

Three Counties Working Together with Regional Board

The Task Force, administered by SAWPA, brings together key watershed stakeholders for the shared purpose of improving water quality across the Santa Ana River Watershed. The Regional Water Quality Monitoring Task Force was created to replace the Stormwater Quality Standards Task Force upon its conclusion.

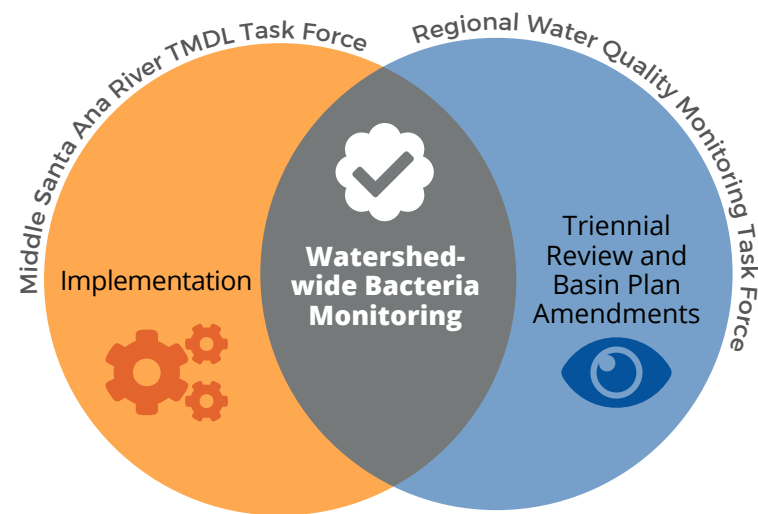
Partners

- Orange County Public Works
- Riverside County Flood Control and Water Conservation District
- San Bernardino County Flood Control District
- Santa Ana Regional Water Quality Control Board
- Middle Santa Ana River Pathogen TMDL Task Force

Key Monitoring Program Goals

The Santa Ana Regional Bacteria Monitoring Program is structured to direct water quality monitoring resources to the highest priority waterbodies. The Program:

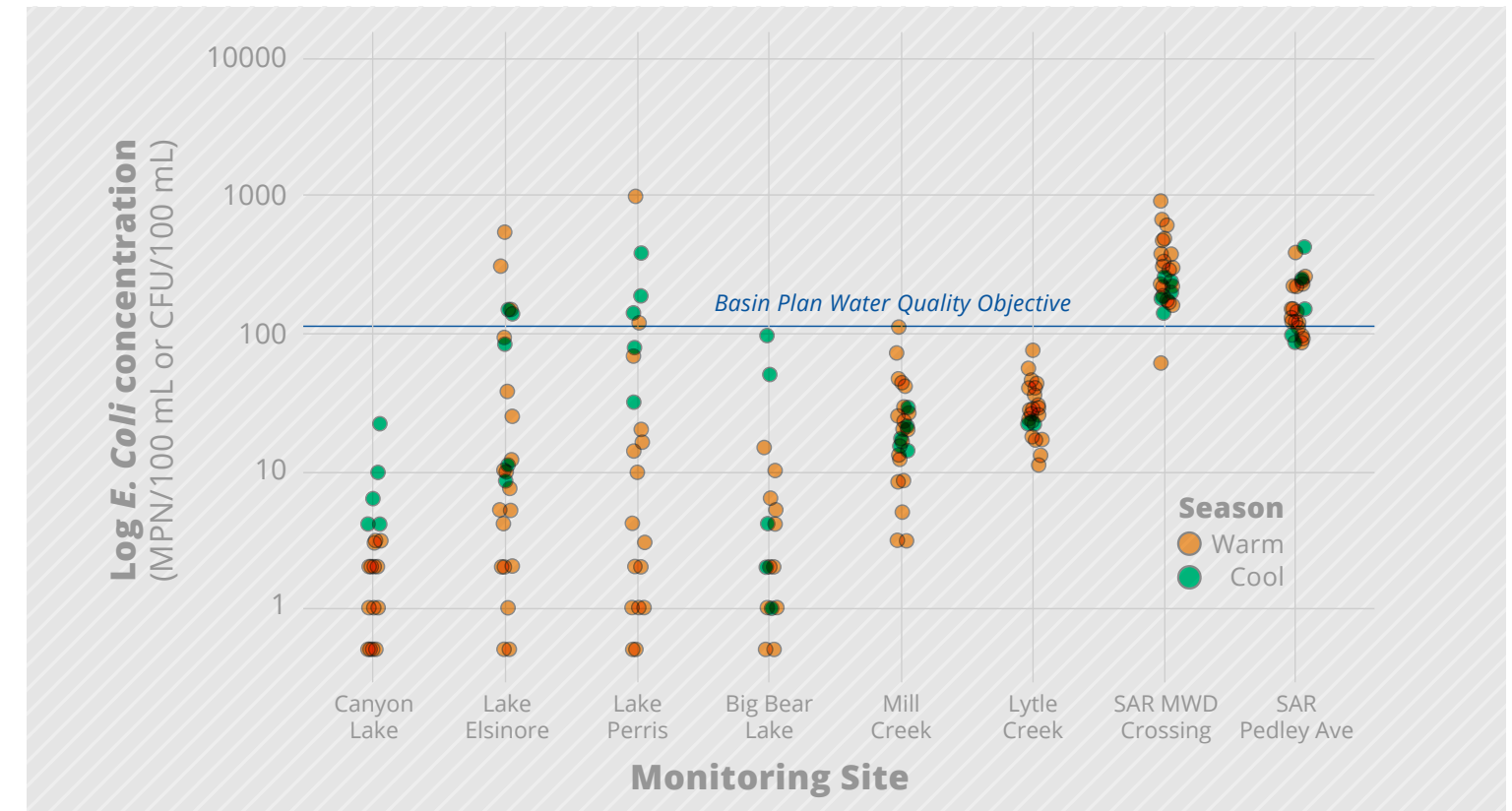
- provides data needed to determine water quality safety for recreational use
- facilitates the Total Maximum Daily Load (TMDL) implementation process and tracks progress and
- allocates public resources in a way that produces the greatest public health benefits



The Regional Water Quality Monitoring Task Force works together with the Middle Santa Ana River TMDL Task Force to implement watershed-wide bacteria monitoring.

Task Force Results

Observed E. coli at Priority 1 Monitoring Sites



This graphic summarizes the distribution of E. coli concentrations observed at Priority 1 sites during the warm/dry and cool/wet seasons. The calculated geomeans did not exceed the Basin Plan Water Quality Objectives of 126 MPN/100 ML at six of the eight sites. Only the two Santa Ana River sites, Metropolitan Water District (MWD) crossing and Pedley, did not meet the objectives.

Next Steps

- Address revisions to statewide bacteria standards
- Resolve inconsistency between Antidegradation Targets and 303(d) Impairment Assessment
- Regulatory alternatives analysis for 303(d) listed streams
- Annual Santa Ana River Regional Bacteria Monitoring Program report

Successes to Date

Key Outcomes: Cost Savings and Regional Collaboration

REGIONAL COLLABORATION FOR REGIONAL BENEFIT

Implementation of the Task Force will achieve economies of scale while **reducing redundancy and streamlining reporting** of regional monitoring efforts.

COST EFFECTIVE STRATEGY TO ALLOCATE FINITE PUBLIC RESOURCES

Merging monitoring efforts has saved **tens of thousands of dollars** per year.